

**STARBOND  
METAL TILES  
&  
ACCESSORIES**

**STARBOND  
BITUMEN  
PRODUCTS**

# CATALOGUE



## About Company

***" Starbond Metal Tiles and Bitumen Products" is serving the building materials market with its high quality , guaranteed production in metal tile panels and roofing systems for 24 years that has been developing in order to bring sustainability to successful services with professional management and qualified technical staff. " Starbond Metal Tiles and Bitumen Tapes" has always been a symbol in the construction market for trust, quality and environmental sensitiveness with its principled, reliable and honest working.***

***Starbond, with its establishment purpose of production Metal Tile Panels and Roofing Systems has realized the need in building market and decided to invest in Bitumen Products in 2023 and started to manufacture self adhesive bitumen tapes and membranes.***

***Our company, having the principle of providing service and products under scope of guarantee by using advanced technology production and application models, will continue to provide services in future in a sustainable and consistent manner along with the its successfull works and experiences throughout many years in the construction market with its long-standing past.***

***Our brand STARBOND has been proceeding on its way to be a preferred brand in the woldwide markets as being a substantial solution in both Metal Tile Panels and Self Adhesive Bitumen Tapes & Membranes.***



# Content

<b>Starbond Stone Coated Metal Sheets</b>	<b>01</b>
<b>Starbond Metal Sheets</b>	<b>03</b>
<b>Starbond Easy Systems</b>	<b>04</b>
<b>Complementary Products</b>	<b>05</b>
<b>References</b>	<b>06</b>
<b>STARSELF BT 1000</b>	<b>07</b>
<b>STARSELF BT 1500</b>	<b>09</b>
<b>STARSELF ALU 1000</b>	<b>11</b>
<b>STARSELF ALU 1500</b>	<b>13</b>
<b>STARSELF ALU R800</b>	<b>15</b>
<b>STARSELF ALU 600</b>	<b>17</b>
<b>STARSELF HCT 1000</b>	<b>19</b>
<b>STARSELF FELT-RAN</b>	<b>21</b>
<b>STARSELF HDPE 1500</b>	<b>23</b>
<b>STARSELF DUO 1500</b>	<b>25</b>
<b>STARSELF SB 2200</b>	<b>27</b>
<b>STARMAST CR</b>	<b>29</b>
<b>STARMAST HS</b>	<b>31</b>

## Starbond Stone Coated Metal Sheets

Starbond Stone Coated Metal Tiles are an ideal construction material which are made of % 55 Aluminum-Zinc (ALUZINC®) alloy coated sheet steel that is known as GALVALUME®. This product is water-resistant and corrosion-resistant. It has 50 years warranty and has a strong resistance to aggressive atmospheric influences.

We have wide range of models and colors which we believe will suit your requirements.



### STARBOND CLASSIC

<b>Tile Size (L x W)</b>	<b>1350 mm x 430 mm</b>
<b>Installed Exposure (L x W)</b>	<b>1300 mm x 370 mm</b>
<b>Min. Roof Pitch</b>	<b>12°</b>
<b>Weight Per Tile</b>	<b>±3.1 Kg</b>
<b>Tiles Per Square (Tile / m<sup>2</sup>)</b>	<b>±2.08 pcs / m<sup>2</sup></b>
<b>Weight Per Square (Weight / m<sup>2</sup>)</b>	<b>±6.8 Kg / m<sup>2</sup></b>



Classic  
1355 mm x 320 mm

### STARBOND ALATURCA

<b>Tile Size (L x W)</b>	<b>1335 mm x 415 mm</b>
<b>Installed Exposure (L x W)</b>	<b>1215 mm x 368 mm</b>
<b>Min. Roof Pitch</b>	<b>12°</b>
<b>Weight Per Tile</b>	<b>±3.0 Kg</b>
<b>Tiles Per Square (Tile / m<sup>2</sup>)</b>	<b>±2.2 pcs / m<sup>2</sup></b>
<b>Weight Per Square (Weight / m<sup>2</sup>)</b>	<b>±6.6 Kg / m<sup>2</sup></b>



Alaturca  
1040mm x 320 mm

### STARBOND SENATOR

<b>Tile Size (L x W)</b>	<b>1325 mm x 430 mm</b>
<b>Installed Exposure (L x W)</b>	<b>1250 mm x 368 mm</b>
<b>Min. Roof Pitch</b>	<b>15°</b>
<b>Weight Per Tile</b>	<b>±3.0 Kg</b>
<b>Tiles Per Square (Tile / m<sup>2</sup>)</b>	<b>±2.2 pcs / m<sup>2</sup></b>
<b>Weight Per Square (Weight / m<sup>2</sup>)</b>	<b>±6.6 Kg / m<sup>2</sup></b>



## Starbond Stone Coated Metal Sheets

### STARBOND OTTOMAN

Tile Size (L x W)	1290 mm x 385 mm
Installed Exposure (L x W)	1190 mm x 358 mm
Min. Roof Pitch	12°
Weight Per Tile	±2.9 Kg
Tiles Per Square (Tile / m <sup>2</sup> )	±2.3 pcs / m <sup>2</sup>
Weight Per Square (Weight / m <sup>2</sup> )	±6.7 Kg / m <sup>2</sup>



Ottoman  
996 mm x 316 mm

### STARBOND AQUAPAN

Tile Size (L x W)	1180 mm x 510 mm
Installed Exposure (L x W)	1130 mm x 442,5 mm
Min. Roof Pitch	12°
Weight Per Tile	±3.0 Kg
Tiles Per Square (Tile / m <sup>2</sup> )	±2 pcs / m <sup>2</sup>
Weight Per Square (Weight / m <sup>2</sup> )	±6 Kg / m <sup>2</sup>



### Available Colors



Sapphire



Orange



Anthracite Gray



Green Black



Midnight Blue



Terra Cotta



MoonLight



Green



Black



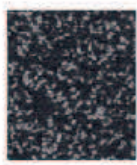
Brick Red



Charcoal Gray



Coffee



Granite Gray



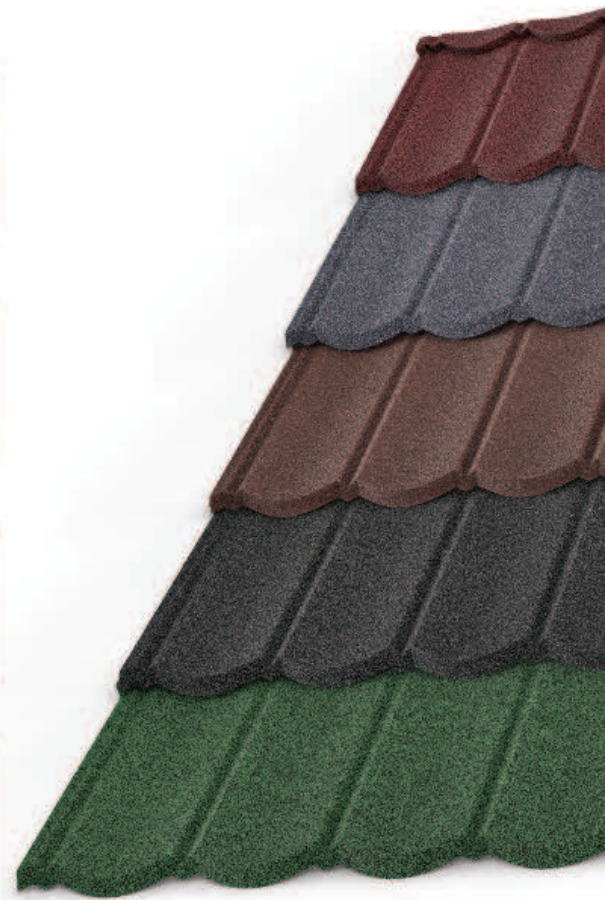
Red Black



Moongray



Havana Coffee



## Starbond Metal Sheets

### STARBOND CARISMA

<i>Tile Size (L x W)</i>	<i>1180 mm x 370 mm</i>
<i>Footprint (L x W)</i>	<i>1100 mm x 370 mm</i>
<i>Min. Roof Slope</i>	<i>10°</i>



### STARBOND ECO AQUAPAN

<i>Tile Size (L x W)</i>	<i>950 mm or 1850 mm</i>
<i>Installed Exposure (L x W)</i>	<i>1180 mm</i>
<i>Min. Roof Pitch</i>	<i>12°</i>



### STARBOND CLASSIC ECO XL

<i>Tile Size (L x W)</i>	<i>1180 mm x 370 mm</i>
<i>Installed Exposure (L x W)</i>	<i>1130 mm x 370 mm</i>
<i>Min. Roof Pitch</i>	<i>10°</i>



### AVAILABLE COLORS



Ral 3009



Ral 6020



Ral 7016



Ral 8017



Ral 9002

## Starbond Easy Systems

### Starbond Easy Lock

Easy Lock which is designed to create a revolution in the roofing market, provides easy installation and allows you to use your time with most beneficial way. Easy Lock does not require extra screwing or difficult installation. Thanks to its self-locking structure, they can be installed easily and quickly.

Easy Lock produced from high quality materials, is designed for long-lasting use. Since it has resistant to all kinds of changing weather conditions, it protects your roof safely.

With the introduction of Easy Lock to the market, we offer a more efficient and practical method for roofing. Unlike other solutions in the market, Easy Lock saves your time and prevent a lumpy, wavy or bruised appearance.

We invite everyone looking for practical solutions for roofing to the Starbond family. We are here to add a new vision to the market and we aim to make a difference with the advantages we offer to our customers. Let's create the roofs of the future together with practical roof systems.



### Starbond High Pitch Easy Lock

High Pitch Easy Lock Roof and Facade products are very easy to install thanks to their self-locking features. The special clips used in these products ensure that the parts fit tightly together and prevent a lumpy, wavy or bruised appearance.

The special clip system facilitates the correct placement of the parts and ensures that they are brought together in accordance with the desired structure. The design of the clips increases the safety of the holding and durability of the parts.

High quality materials used in production of Easy Lock Roof, minimizes the problems during the assembly process. Producing the parts in the right sizes ensures that the roof or facade structure looks smooth and aesthetic.



### Starbond Metal Siding

Installation process of Metal Siding Facades is very fast and practical because of the self-locking structure. You do not need to use extra accessories for installation. The panels are seamed together by a single lock.

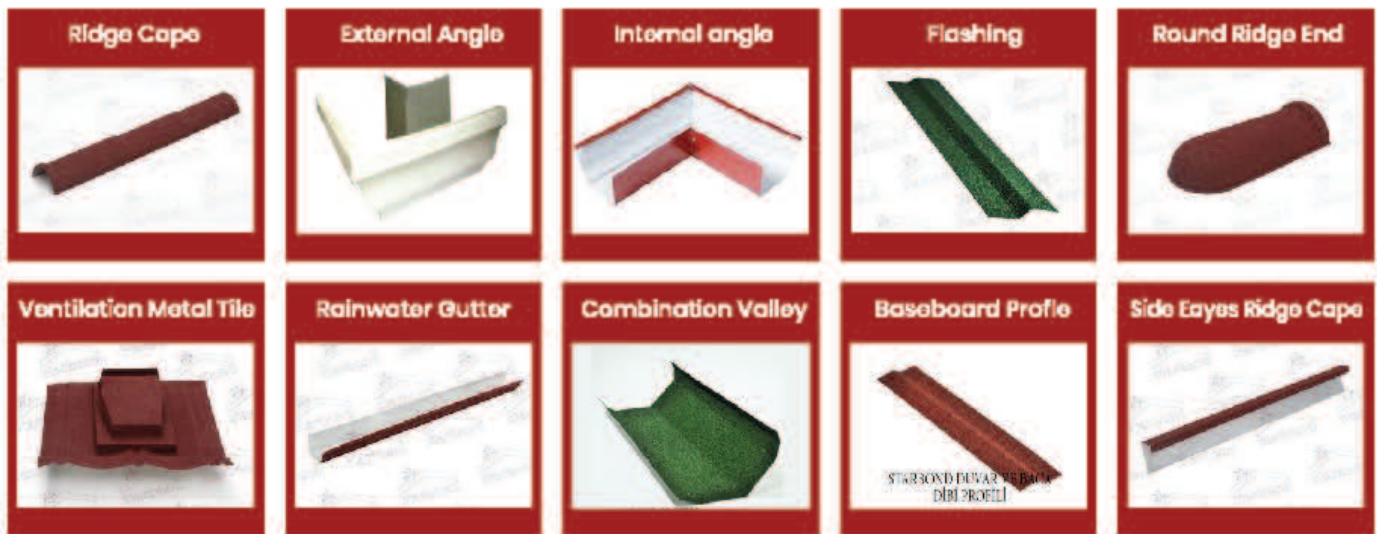
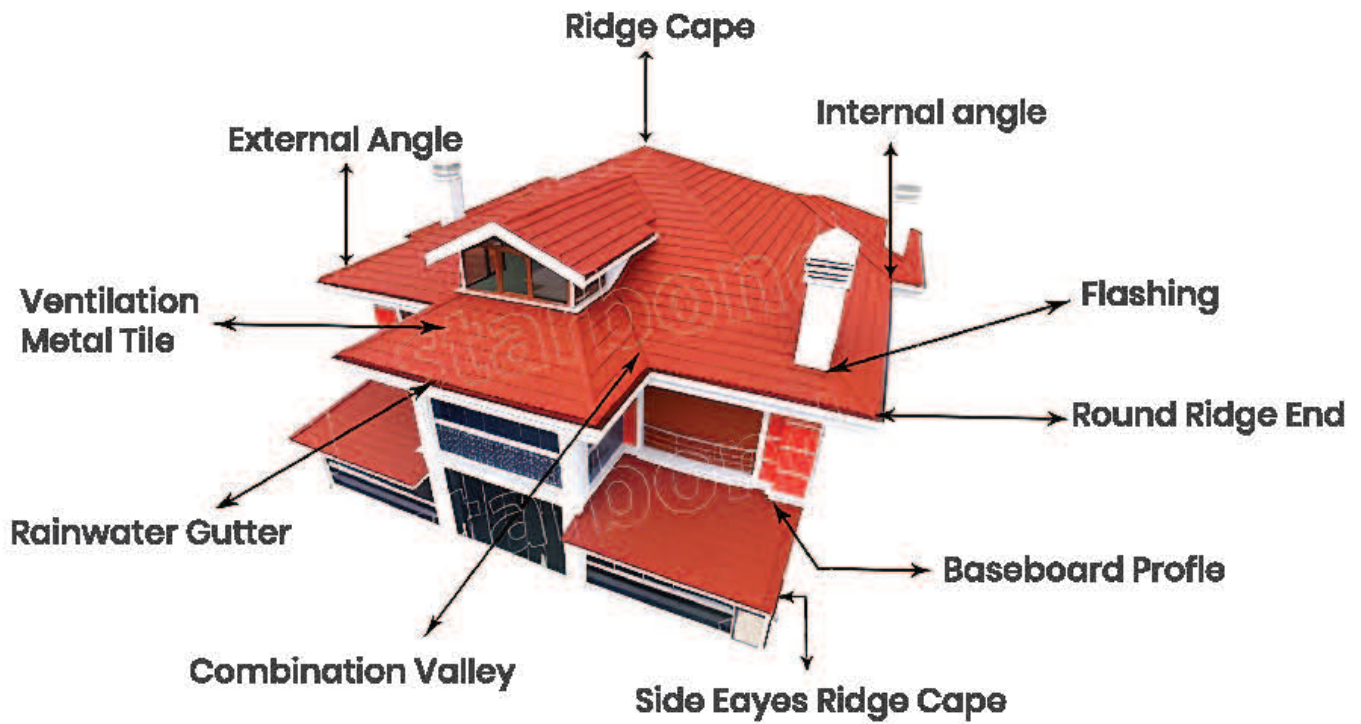
Lock Roof Panels are made of durable metal materials. This ensures the longevity of the facades. These materials used for Metal Siding Facades have a resistant to external factors and different weather conditions.

The self-locking structure does not need maintenance. You can replace or repair panels at any time without requiring disassembly or reassembly.

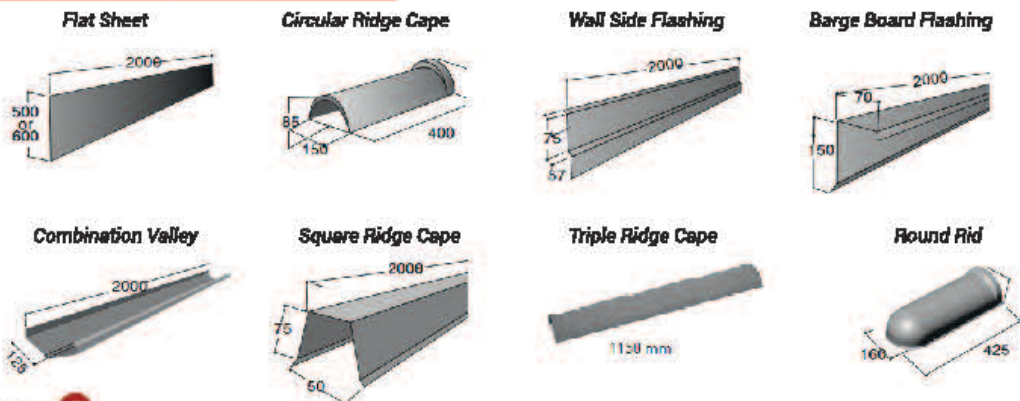
These products also provide an aesthetic appearance. Thanks to the locking system, you can have an a sleek and seamless look with a modern and minimalist style.



## Complementary Products



## Complementary Products





## References



# Starbond Bitumen Products

## STARSELF BT 1000

### Elastomeric Bitumen Based, Self Adhesive, Waterproofing Tape

#### Description

STARSELF BT 1000 is an elastomeric bitumen based, cold applicable, one side coated with aluminum foil, other side is adhesive waterproofing tape.

#### Fields of Application

It provides waterproofing with adhering on different substrates such as wood, metal, glass, plaster, concrete etc. Also it is used as sound blocker for vehicles, ships.

#### Features and Benefits

Aluminum foil top surface

Applied easily even though inclined surface because of elasticity.

Convenient with bituminous system.

Self adhesive.

Easy to applied.

Applicable on wide range substrates.

#### Properties

**Surface** : Aluminum foil

**Color** : Natural Aluminium, Terracota, Green, Anthracite, Bric Red, Platin Grey

**Application Temperature** : +10 °C 30 °C

**Thickness / Length** : 1,00 mm / 10 m

#### Application Procedure

##### Preparation of Substrate

Application surface must be dry, clean and clean off materials which prevent bonding, such as dust, oil, rust and remove loose pieces. High absorbent surfaces such as concrete, plaster, chipboard must be primed with bituminous based primer.

##### Application Method

Peel the removable film layer of STARSELF BT 1000 and pressed firmly sticky surface on substrate. Tape should be fully contact with the substrate by pressing its every point on application surface. It should be pressed onto the foil using a silicone roller.

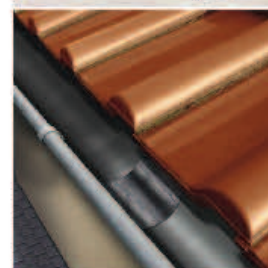
#### Packaging

Width (cm)	Length (m)	Pallet Size (cm)	Rolls in box	Box on Pallet
5 cm	10 m	100x120	12 rolls	84 boxes
7,5 cm	10 m	100x120	8 rolls	84 boxes
10 cm	10 m	100x120	6 rolls	84 boxes
15 cm	10 m	100x120	4 rolls	84 boxes
20 cm	10 m	100x120	3 rolls	84 boxes
30 cm	10 m	100x120	2 rolls	84 boxes
60 cm	10 m	100x120	1 roll	84 boxes

#### Storage Conditions and Shelf Life

2 years from the production date in case it is stored in its sealed and undamaged package in dry ambient conditions at a temperature from +5°C to +30°C away from direct sunlight.

In cases where the air temperature is below +10°C, the use of a hot air source is recommended.



Wateright



High flexibility



Weather resistant



Resistant to UV



Flame-free  
Easy installation



Good application  
to support



SAFETY DATA SHEET (SDS)

## STARSELF BT 1000

Elastomeric Bitumen Based, Self Adhesive, Waterproofing Tape

<b>PRODUCT NAME</b>	STARSELF BT 1000		
<b>PRODUCT PROPERTIES</b>	VALUE		
<b>Thickness</b>	1,0 mm		
<b>Roll Width</b>	5 cm – 7,5 cm – 10 cm – 15 cm – 20 cm – 30 cm – 60 cm		
<b>Unit Weight</b>	1,5 kg/m <sup>2</sup>		
<b>Roll Length</b>	10 m		
<b>Top Surface</b>	Aluminium Foil		
<b>Bottom Surface</b>	Siliconized Film		
<b>Color</b>	Natural Aluminium, Terracota, Green, Anthracite, Platine Grey, Bric Red		
<b>HS Code</b>	6807.10.00.00.00		
<b>PERFORMANCE</b>			
Characteristic	Test method	Units	Result
Water tightness to liquid water – Method B 2 kpa	EN 192B	-	Pass
Tensile properties: maximum tensile force / elongation	EN 12311-1	N/50mm	> 150 N/50mm
Durability of water vapour resistance against artificial ageing	EN 1296 + EN 1931	-	Pass
Durability of watertightness against chemicals	EN 1847 + EN 192B	-	Pass
Resistance to tear (nail shank)	EN 12310-1	N	>30 N
Impact resistance	EN 12691	mm	NPD
Low temperature flexibility	EN 1109	°C	-25 °C
Flow Resistance at Elevated Temperature	EN 1110	°C	80 °C
Joint strength	EN 12317-1	N/50mm / ±%10	>150 N/50mm
Water vapour transmission*	EN 1931	m	>1500m
Reaction to fire	EN 13501-1	-	E
Length	EN 184B-1	m	10
Width	EN 184B-1	cm	5-7,5-10-15-20-30-60 cm
Thickness	EN 1849-1	mm	1,0 mm ±%10
Mass	EN 1849-1	Kg/m <sup>2</sup>	1,5 kg/ m <sup>2</sup> ±10%
Visible defects	EN 1850-1	-	None

*"Special thickness and size can be produced according to customer demands."*

## STARSELF BT 1500

### Elastomeric Bitumen Based, Self Adhesive, Waterproofing Tape

#### Description

STARSELF BT 1500 is an elastomeric bitumen based, cold applicable, one side coated with aluminum foil, other side is adhesive waterproofing tape.

#### Fields of Application

It provides waterproofing with adhering on different substrates such as wood, metal, glass, plaster, concrete etc. Also it is used as sound blocker for vehicles, ships.

#### Features and Benefits

Aluminum foil top surface

Applied easily even though inclined surface because of elasticity.

Convenient with bituminous system.

Self adhesive.

Easy to applied.

Applicable on wide range substrates.

#### Properties

**Surface** : Aluminum foil

**Color** : Natural Aluminium, Terracota, Green, Anthracite, Bric Red, Platin Grey

**Application Temperature** : +10 °C 30 °C

**Thickness / Length** : 1,50 mm / 10 m

#### Application Procedure

##### Preparation of Substrate

Application surface must be dry, clean and clean off materials which prevent bonding, such as dust, oil, rust and remove loose pieces. High absorbent surfaces such as concrete, plaster, chipboard must be primed with bituminous based primer.

##### Application Method

Peel the removable film layer of STARSELF BT 1500 and pressed firmly sticky surface on substrate. Tape should be fully contact with the substrate by pressing its every point on application surface. It should be pressed onto the foil using a silicone roller.

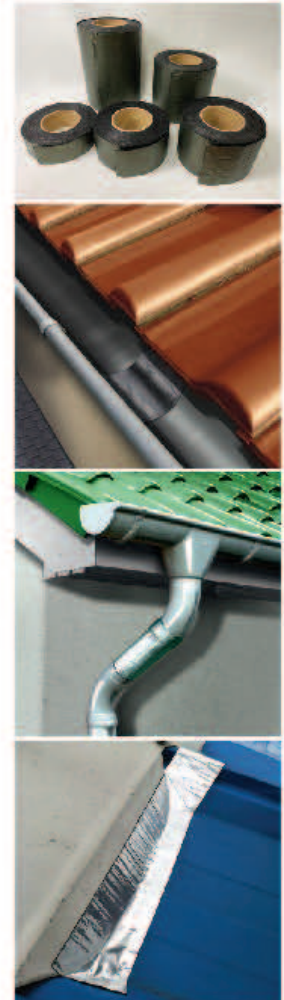
#### Packaging

Width (cm)	Length (m)	Pallet Size (cm)	Rolls in box	Box on Pallet
5 cm	10 m	100x120	12 rolls	60 boxes
7,5 cm	10 m	100x120	8 rolls	60 boxes
10 cm	10 m	100x120	6 rolls	60 boxes
15 cm	10 m	100x120	4 rolls	60 boxes
20 cm	10 m	100x120	3 rolls	60 boxes
30 cm	10 m	100x120	2 rolls	60 boxes
60 cm	10 m	100x120	1 roll	60 boxes

#### Storage Conditions and Shelf Life

2 years from the production date in case it is stored in its sealed and undamaged package in dry ambient conditions at a temperature from +5°C to +30°C away from direct sunlight.

In cases where the air temperature is below +10°C, the use of a hot air source is recommended.



SAFETY DATA SHEET (SDS)

## STARSELF BT 1500

Elastomeric Bitumen Based, Self Adhesive, Waterproofing Tape

<b>PRODUCT NAME</b>	STARSELF BT 1500		
<b>PRODUCT PROPERTIES</b>	VALUE		
<b>Thickness</b>	1,5 mm		
<b>Roll Width</b>	5 cm – 7,5 cm – 10 cm – 15 cm – 20 cm – 30 cm – 60 cm		
<b>Unit Weight</b>	2,2 kg/m <sup>2</sup>		
<b>Roll Length</b>	10 m		
<b>Top Surface</b>	Aluminium Foil		
<b>Bottom Surface</b>	Siliconized Film		
<b>Color</b>	Natural Aluminium, Terracota, Green, Anthracite, Platine Grey, Bric Red		
<b>HS Code</b>	6807.10.00.00.00		
<b>PERFORMANCE</b>			
Characteristic	Test method	Units	Result
Water tightness to liquid water – Method B 2 kpa	EN 1928	-	Pass
Tensile properties: maximum tensile force / elongation	EN 12311-1	N/50mm	> 150 N/50mm
Durability of water vapour resistance against artificial ageing	EN 1296 + EN 1931	-	Pass
Durability of watertightness against chemicals	EN 1847 + EN 1928	-	Pass
Resistance to tear (nail shank)	EN 12310-1	N	>30 N
Impact resistance	EN 12691	mm	NPD
Low temperature flexibility	EN 1109	°C	-25 °C
Flow Resistance at Elevated Temperature	EN 1110	°C	80 °C
Joint strength	EN 12317-1	N/50mm / ±%10	>150 N/50mm
Water vapour transmission*	EN 1931	m	>1500m
Reaction to fire	EN 13501-1	-	E
Length	EN 1848-1	m	10
Width	EN 1848-1	cm	5-7,5-10-15-20-30-60 cm
Thickness	EN 1849-1	mm	1,5 mm ±%10
Mass	EN 1849-1	Kg/m <sup>2</sup>	2,2 kg/ m <sup>2</sup> ±10%
Visible defects	EN 1850-1	-	None

*\*Special thickness and size can be produced according to customer demands.\**

## STARSELF ALU - 1000

### Elastomeric Bitumen Based, Self Adhesive, Waterproofing Membrane

#### Description

STARSELF ALU 1000 is an elastomeric bitumen based, cold applicable, one side coated with aluminum foil, other side is adhesive waterproofing membrane.

#### Fields of Application

It provides waterproofing with adhering on different substrates such as wood, metal, glass, plaster, concrete etc. Also it is used as sound blocker for vehicles, ships.

#### Features and Benefits

Aluminum foil top surface

Applied easily even though inclined surface because of elasticity.

Convenient with bituminous system.

Self adhesive.

Easy to applied.

Applicable on wide range substrates.

#### Properties

**Surface** : Aluminum foil

**Color** : Natural Aluminium, Terracota, Green, Anthracite, Bric Red, Platin Grey

**Application Temperature** : +10 °C 30 °C

**Thickness / Width** : 1,00 mm / 110 cm

#### Application Procedure

##### Preparation of Substrate

Application surface must be dry, clean and clean off materials which prevent bonding, such as dust, oil, rust and remove loose pieces. High absorbent surfaces such as concrete, plaster, chipboard must be primed with bituminous based primer.

##### Application Method

Peel the removable film layer of STARSELF ALU 1000 and pressed firmly sticky surface on substrate. Tape should be fully contact with the substrate by pressing its every point on application surface. It should be pressed onto the foil using a silicone roller.

#### Packaging

Width (cm)	Length (m)	Pallet Size (cm)	Roll Weight	Rolls in box
110 cm	10 m	100x120	16,50 kg ±10%	56 rolls
110 cm	20 m	100x120	33,00 kg ±10%	30 rolls

#### Storage Conditions and Shelf Life

2 years from the production date in case it is stored in its sealed and undamaged package in dry ambient conditions at a temperature from +5°C to +30°C away from direct sunlight.

In cases where the air temperature is below +10°C, the use of a hot air source is recommended.



Weatheright



High flexibility



Weather resistant



Resistant to UV



Flame-free  
Easy installation



Good application  
to support



SAFETY DATA SHEET (SDS)

## STARSELF ALU - 1000

Elastomeric Bitumen Based, Self Adhesive, Waterproofing Membrane

<b>PRODUCT NAME</b>	STARSELF ALU 1000		
<b>PRODUCT PROPERTIES</b>	VALUE		
<b>Thickness</b>	1,0 mm		
<b>Roll Width</b>	110 cm		
<b>Unit Weight</b>	1,5 kg/m <sup>2</sup>		
<b>Roll Length</b>	Standart: 10 m Max.: 20 m		
<b>Top Surface</b>	Aluminium Foil		
<b>Bottom Surface</b>	Siliconized Film		
<b>Color</b>	Natural Aluminium, Terracota, Green, Anthracite, Platine Grey, Bric Red		
<b>HS Code</b>	6807.10.00.00.00		
<b>PERFORMANCE</b>			
Characteristic	Test method	Units	Result
Water tightness to liquid water – Method B 2 kpa	EN 1928	-	Pass
Tensile properties: maximum tensile force / elongation	EN 12311-1	N/50mm	> 150 N/50mm
Durability of water vapour resistance against artificial ageing	EN 1296 + EN 1931	-	Pass
Durability of watertightness against chemicals	EN 1847 + EN 1928	-	Pass
Resistance to tear (nail shank)	EN 12310-1	N	>30 N
Impact resistance	EN 12691	mm	NPD
Low temperature flexibility	EN 1109	°C	-25 °C
Flow Resistance at Elevated Temperature	EN 1110	°C	80 °C
Joint strength	EN 12317-1	N/50mm / ±%10	>150 N/50mm
Water vapour transmission*	EN 1931	m	>1500m
Reaction to fire	EN 13501-1	-	E
Length	EN 1848-1	m	10 m *
Width	EN 1848-1	cm	110 cm
Thickness	EN 1849-1	mm	1,0 mm ±%10
Mass	EN 1849-1	Kg/m <sup>2</sup>	1,5 kg/ m <sup>2</sup> ±10%
Visible defects	EN 1850-1	-	None

*\*Special thickness and size can be produced according to customer demands.*

## STARSELF ALU - 1500

### Elastomeric Bitumen Based, Self Adhesive, Waterproofing Membrane

#### Description

STARSELF ALU 1500 is an elastomeric bitumen based, cold applicable, one side coated with aluminum foil, other side is adhesive waterproofing membrane.

#### Fields of Application

It provides waterproofing with adhering on different substrates such as wood, metal, glass, plaster, concrete etc. Also it is used as sound blocker for vehicles, ships.

#### Features and Benefits

Aluminum foil top surface

Applied easily even though inclined surface because of elasticity.

Convenient with bituminous system.

Self adhesive.

Easy to applied.

Applicable on wide range substrates.

#### Properties

**Surface** : Aluminum foil

**Color** : Natural Aluminium, Terracota, Green, Anthracite, Bric Red, Platin Grey

**Application Temperature** : +10 °C 30 °C

**Thickness / Width** : 1,50 mm / 110 cm

#### Application Procedure

##### Preparation of Substrate

Application surface must be dry, clean and clean off materials which prevent bonding, such as dust, oil, rust and remove loose pieces. High absorbent surfaces such as concrete, plaster, chipboard must be primed with bituminous based primer.

##### Application Method

Peel the removable film layer of STARSELF ALU 1500 and pressed firmly sticky surface on substrate. Tape should be fully contact with the substrate by pressing its every point on application surface. It should be pressed onto the foil using a silicone roller.

#### Packaging

Width (cm)	Length (m)	Pallet Size (cm)	Roll Weight	Rolls in box
110 cm	10 m	100x120	24,20 kg $\pm 10\%$	42 rolls
110 cm	20 m	100x120	48,40 kg $\pm 10\%$	20 rolls

#### Storage Conditions and Shelf Life

2 years from the production date in case it is stored in its sealed and undamaged package in dry ambient conditions at a temperature from +5°C to +30°C away from direct sunlight.

In cases where the air temperature is below +10°C, the use of a hot air source is recommended.



Watertight



High flexibility



Weather resistant



Resistant to UV



Flame-free  
Easy installation



Good application  
to support



SAFETY DATA SHEET (SDS)



## STARSELF ALU - 1500

Elastomeric Bitumen Based, Self Adhesive, Waterproofing Membrane

<b>PRODUCT NAME</b>	STARSELF ALU 1500		
<b>PRODUCT PROPERTIES</b>	VALUE		
<b>Thickness</b>	1,5mm		
<b>Roll Width</b>	110 cm		
<b>Unit Weight</b>	2,2 kg/m <sup>2</sup>		
<b>Roll Length</b>	Standart: 10 m Max: 20 m		
<b>Top Surface</b>	Aluminium Foil		
<b>Bottom Surface</b>	Siliconized Film		
<b>Color</b>	Natural Aluminium, Terracota, Green, Anthracite, Platine Grey, Bric Red		
<b>HS Code</b>	6807.10.00.00.00		
<b>PERFORMANCE</b>			
<b>Characteristic</b>	<b>Test method</b>	<b>Units</b>	<b>Result</b>
Water tightness to liquid water – Method B 2 kpa	EN 1928	-	Pass
Tensile properties: maximum tensile force / elongation	EN 12311-1	N/50mm	> 150 N/50mm
Durability of water vapour resistance against artificial ageing	EN 1296 + EN 1931	-	Pass
Durability of watertightness against chemicals	EN 1847 + EN 1928	-	Pass
Resistance to tear (nail shank)	EN 12310-1	N	>30 N
Impact resistance	EN 12691	mm	NPD
Low temperature flexibility	EN 1109	°C	-25 °C
Flow Resistance at Elevated Temperature	EN 1110	°C	80 °C
Joint strength	EN 12317-1	N/50mm / ±%10	>150 N/50mm
Water vapour transmission*	EN 1931	m	>1500m
Reaction to fire	EN 13501-1	-	E
Length	EN 1848-1	m	10 m *
Width	EN 1848-1	cm	110 cm
Thickness	EN 1849-1	mm	1,5 mm ±%10
Mass	EN 1849-1	Kg/m <sup>2</sup>	2,2 kg/ m <sup>2</sup> ±10%
Visible defects	EN 1850-1	-	None

*\*Special thickness and size can be produced according to customer demands.*

## STARSELF ALU - R600

### Bitumen Based, Self Adhesive, Vaper Barrier and Waterproofing Membrane

#### Description

Starbond has developed fiber glass net reinforced, self adhesive, cold applied waterproofing membrane made of bitumen modified by SBS (styrene-butadiene-styrene) with a removable siliconised film underside and aluminium foil on the upper surface.

STARSELF ALU-R 600 is a high performance vapour and air barrier that can be used also in high humidity areas such as swimming pools, kitchens or bathrooms.

It can be applied on to metal, plastic, wooden or bituminous decking with a great performance. STARSELF ALU-R 600 should be used as a part of multilayer insulation system.

#### Features and Benefits

- Cold-applied and self-adhesive
- Vapour and Air Proof – Creates airtight layer for energy saving
- Walkable after application
- Fiber Glass Net provides higher tensile strength
- Resistant to chemicals and ageing
- Can be applied above 10°C

At temperatures below 10 °C and high air humidity, we advise to use the hot air to restore characteristic of the material.

#### Properties

Surface	: Aluminum foil
Reinforcement	: Fiber Glass net
Color	: Natural Aluminium
Application Temperature	: +10 °C 30 °C
Thickness / Width	: 0,6 mm / 110 cm

#### Application Procedure

##### Preparation of Substrate

Application surface must be dry, clean and clean off materials which prevent bonding, such as dust, oil, rust and remove loose pieces. High absorbent surfaces such as concrete, plaster, chipboard must be primed with bituminous based primer.

##### Application Method

Peel the removable film layer of STARSELF ALU-R 600 and pressed firmly sticky surface on substrate. Tape should be fully contact with the substrate by pressing its every point on application surface. It should be pressed onto the foil using a silicone roller.

#### Packaging

Width (cm)	Length (m)	Pallet Quantity (m2)	Roll Weight	Rolls in box
110 cm	20 m	968 m <sup>2</sup>	19,25 kg ±10%	44 rolls
110 cm	25 m	1100 m <sup>2</sup>	24,00 kg ±10%	40 rolls
110 cm	40 m	1056 m <sup>2</sup>	38,50 kg ±10%	24 rolls

Pallet Size: 100x120 cm

#### Storage Conditions and Shelf Life

2 years from the production date in case it is stored in its sealed and undamaged package in dry ambient conditions at a temperature from +5°C to +30°C away from direct sunlight.

In cases where the air temperature is below +10°C, the use of a hot air source is recommended.



Watertight



High flexibility



Weather resistant



Resistant to UV



Flame-free Easy Installation



Good application to support



SAFETY DATA SHEET (SDS)

## STARSELF ALU - R600

Bitumen Based, Self Adhesive, Vaper Barrier and Waterproofing Membrane

<b>PRODUCT NAME</b>	STARSELF ALU-R 600
<b>PRODUCT PROPERTIES</b>	VALUE
<b>Thickness</b>	0,6 mm
<b>Roll Width</b>	110 cm
<b>Unit Weight</b>	875 g/m <sup>2</sup>
<b>Roll Length</b>	20-25-30-40 m
<b>Top Surface / Bottom Surface</b>	Aluminium Foil / Siliconized Film
<b>Reinforcement</b>	Fiber Glass Net
<b>Color</b>	Natural Aluminium
<b>HS Code</b>	6807.10.00.00.00

PERFORMANCE			
Characteristic	Test method	Units	Result
Water tightness to liquid water – Method B 2 kpa	EN 1928	-	Pass
Tensile properties: maximum tensile force / elongation	EN 12311-1	N/50mm	> 750 N/50mm
Durability of water vapour resistance against artificial ageing	EN 1296 + EN 1931	-	Pass
Durability of watertightness against chemicals	EN 1847 + EN 1928	-	Pass
Resistance to tear (nail shank)	EN 12310-1	N	NPD
Impact resistance	EN 12691	mm	NPD
Low temperature flexibility	EN 1109	°C	-25 °C
Flow Resistance at Elevated Temperature	EN 1110	°C	90 °C
Joint strength	EN 12317-1	N/50mm / ±%10	>650 N/50mm
Water vapour transmission*	EN 1931	m	>1500m
Reaction to fire	EN 13501-1	-	E
Length	EN 1848-1	m	20-25-30-40 m
Width	EN 1848-1	cm	110 cm
Thickness	EN 1849-1	mm	0,60 mm <sup>±%10</sup>
Mass	EN 1849-1	g/m <sup>2</sup>	875 g/ m <sup>2</sup> <sup>±10%</sup>
Visible defects	EN 1850-1	-	None

## STARSELF ALU - 600

### Elastomeric Bitumen Based, Self Adhesive, Waterproofing Membrane

#### Description

STARSELF ALU 600 is an elastomeric bitumen based, cold applicable, one side coated with aluminum foil, other side is adhesive waterproofing membrane.

#### Fields of Application

It provides waterproofing with adhering on different substrates such as wood, metal, glass, plaster, concrete etc. Also it is used under tiles or shingles. It is economic solution for insulation.

#### Features and Benefits

- Aluminum foil top surface
- Applied easily even though inclined surface because of elasticity.
- Convenient with bituminous system.
- Self adhesive. Thin and lightweight.
- Easy to applied.
- Applicable on wide range substrates.

#### Properties

<b>Surface</b>	: Aluminum foil
<b>Color</b>	: Natural Aluminium, Terracota, Green, Anthracite, Bric Red, Platin Grey
<b>Application Temperature</b>	: +10 °C 30 °C
<b>Thickness</b>	: 0,6 mm / 110 cm

#### Application Procedure

##### Preparation of Substrate

Application surface must be dry, clean and clean off materials which prevent bonding, such as dust, oil, rust and remove loose pieces. High absorbent surfaces such as concrete, plaster, chipboard must be primed with bituminous based primer.

##### Application Method

Peel the removable film layer of STARSELF ALU 600 and pressed firmly sticky surface on substrate. Tape should be fully contact with the substrate by pressing its every point on application surface. It should be pressed onto the foil using a silicone roller.

#### Packaging

Width (cm)	Length (m)	Pallet Quantity (m <sup>2</sup> )	Roll Weight	Rolls in box
110 cm	20 m	968 m <sup>2</sup>	19,25 kg ±10%	44 rolls
110 cm	25 m	1100 m <sup>2</sup>	24,00 kg ±10%	40 rolls
110 cm	40 m	1056 m <sup>2</sup>	38,50 kg ±10%	24 rolls

Pallet Size: 100x120 cm

#### Storage Conditions and Shelf Life

2 years from the production date in case it is stored in its sealed and undamaged package in dry ambient conditions at a temperature from +5°C to +30°C away from direct sunlight.

In cases where the air temperature is below +10°C, the use of a hot air source is recommended.



Watertight



High flexibility



Weather resistant



Resistant to UV



Flame-free  
Easy installation



Good application to support



SAFETY DATA SHEET (SDS)

## STARSELF ALU - 600

Elastomeric Bitumen Based, Self Adhesive, Waterproofing Membrane

<b>PRODUCT NAME</b>	STARSELF ALU 600		
<b>PRODUCT PROPERTIES</b>	VALUE		
<b>Thickness</b>	0,6 mm		
<b>Roll Width</b>	110 cm		
<b>Unit Weight</b>	875 g/m <sup>2</sup>		
<b>Roll Length</b>	10 m – 20 m – 25 m – 40 m		
<b>Top Surface</b>	Aluminium Foil		
<b>Bottom Surface</b>	Siliconized Film		
<b>Color</b>	Natural Aluminium, Terracota, Green, Anthracite, Platine Grey, Bric Red		
<b>HS Code</b>	6807.10.00.00.00		
<b>PERFORMANCE</b>			
Characteristic	Test method	Units	Result
Water tightness to liquid water – Method B 2 kpa	EN 1928	-	Pass
Tensile properties: maximum tensile force / elongation	EN 12311-1	N/50mm	> 150 N/50mm
Durability of water vapour resistance against artificial ageing	EN 1296 + EN 1931	-	Pass
Durability of watertightness against chemicals	EN 1847 + EN 1928	-	Pass
Resistance to tear (nail shank)	EN 12310-1	N	>30 N
Impact resistance	EN 12691	mm	NPD
Low temperature flexibility	EN 1109	°C	-25 °C
Flow Resistance at Elevated Temperature	EN 1110	°C	90 °C
Joint strength	EN 12317-1	N/50mm / ±%10	>150 N/50mm
Water vapour transmission*	EN 1931	m	>1500m
Reaction to fire	EN 13501-1	-	E
Length	EN 1848-1	m	10 – 20 – 25 – 40 m
Width	EN 1848-1	cm	110 cm
Thickness	EN 1849-1	mm	0-60 mm ±%10
Mass	EN 1849-1	Kg/m <sup>2</sup>	875 g/ m <sup>2</sup> ±10%
Visible defects	EN 1850-1	-	None

*\*Special thickness and size can be produced according to customer demands.*

## STARSELF HCT 1000

### Elastomeric Bitumen Based, Self Adhesive, Hatch Cover Tape

#### Description

STARSELF HCT 1000 is a elastomeric bitumen based, cold applicable, one side coated with polyester film (PET), other side is adhesive waterproofing tape.

#### Fields of Application

STARSELF HCT 1000 provides waterproofing of hatch covers in ships. It provides ease of application by adhering well to the metal surface.

#### Features and Benefits

PET foil top surface

Applied easily even though inclined surface because of elasticity.

Self adhesive.

Easy to applied.

Applicable on wide range substrates.

#### Properties

Surface	: PET foil
Color	: Black
Application Temperature	: +10 °C 30 °C
Thickness / Length	: 1,00 mm / 20 m

#### Application Procedure

##### Preparation of Substrate

Application surface must be dry, clean and clean off materials which prevent bonding, such as dust, oil, rust and remove loose pieces. High absorbent surfaces such as concrete, plaster, chipboard must be primed with bituminous based primer.

##### Application Method

Peel the removable film layer of STARSELF HCT 1000 and pressed firmly sticky surface on substrate. Tape should be fully contact with the substrate by pressing its every point on application surface. It should be pressed onto the foil using a silicone roller.

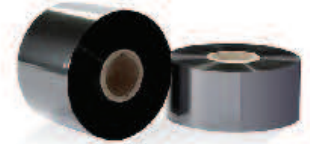
#### Packaging

Width (cm)	Length (m)	Pallet Size (cm)	Rolls in box	Box on Pallet
10 cm	20 m	100x120	6 rolls	60 boxes
15 cm	20 m	100x120	4 rolls	60 boxes
20 cm	20 m	100x120	3 rolls	60 boxes
30 cm	20 m	100x120	2 rolls	60 boxes

#### Storage Conditions and Shelf Life

2 years from the production date in case it is stored in its sealed and undamaged package in dry ambient conditions at a temperature from +5°C to +30°C away from direct sunlight.

In cases where the air temperature is below +10°C, the use of a hot air source is recommended.



Water-tight



High flexibility



Flame-free  
Easy Installation



Good application  
to support



SAFETY DATA SHEET (SDS)

## STARSELF HCT 1000

Elastomeric Bitumen Based, Self Adhesive, Hatch Cover Tape

<b>PRODUCT NAME</b>	STARSELF HCT 1000		
<b>PRODUCT PROPERTIES</b>	VALUE		
<b>Thickness</b>	1,0 mm		
<b>Roll Width</b>	10 cm – 15 cm – 20 cm – 30 cm		
<b>Unit Weight</b>	1,5 kg/m <sup>2</sup>		
<b>Roll Length</b>	20 m *		
<b>Top Surface</b>	PET Foil (Polyester Film)		
<b>Bottom Surface</b>	Siliconized Film		
<b>Color</b>	Black		
<b>HS Code</b>	6807.10.00.00.00		
<b>PERFORMANCE</b>			
Characteristic	Test method	Units	Result
Water tightness to liquid water – Method B 2 kpa	EN 1928	-	Pass
Tensile properties: maximum tensile force / elongation	EN 12311-1	N/50mm	> 150 N/50mm
Durability of water vapour resistance against artificial ageing	EN 1296 + EN 1931	-	Pass
Durability of watertightness against chemicals	EN 1847 + EN 1928	-	Pass
Resistance to tear (nail shank)	EN 12310-1	N	NPD
Impact resistance	EN 12691	mm	NPD
Low temperature flexibility	EN 1109	°C	-25 °C
Flow Resistance at Elevated Temperature	EN 1110	°C	80 °C
Joint strength	EN 12317-1	N/50mm / ±%10	>150 N/50mm
Reaction to fire	EN 13501-1	-	E
Length	EN 1848-1	m	20
Width	EN 1848-1	cm	10-15-20-30 cm
Thickness	EN 1849-1	mm	1,0 mm ±%10
Mass	EN 1849-1	Kg/m <sup>2</sup>	1,5 kg/ m <sup>2</sup> ±10%
Visible defects	EN 1850-1	-	None

*"Special thickness and size can be produced according to customer demands."*

## STARSELF FELT-RAN

Elastomeric Bitumen Based, Self Adhesive, Nonwoven Felt Surfaced Membrane / Tape

### PRODUCT DESCRIPTION

Elastomeric bitumen based, nonwoven felt surfaced, easy to apply self-adhesive tape.

### APPLICATION AREAS

Wet floors,  
At the junction of horizontal and vertical surfaces  
As waterproofing under tiles and ceramics  
Under bitumen and cement waterproofing products in difficult details

### ADVANTAGES

It is ready to use and easy to apply.  
It does not require a hot air gun (For joints only.)  
It adheres completely to the applied surface.  
It helps in detail solutions.  
It has high tear strength.  
It is ready to use after application

### TECHNICAL SPECIFICATIONS

#### Material Properties

Top Surface : Spunbond Nonwoven Polyester Felt

Bottom Surface : Silicone Foil

Color : White

Application Temperature : +10 °C 30 °C

Thickness : 1,20 mm

Weight : 1,4 kg/m<sup>2</sup>

### Application Procedure

#### Preparation of Substrate

Application surface must be dry, clean and clean off materials which prevent bonding, such as dust, oil, rust and remove loose pieces. High absorbent surfaces such as concrete, plaster, chipboard must be primed with bituminous based primer.

#### Application Method

Peel the removable film layer of STARSELF FELT-RAN and pressed firmly sticky surface on substrate. Tape should be fully contact with the substrate by pressing its every point on application surface. It should be pressed onto the foil using a silicone roller.

### Packaging

Width (cm)	Length (m)	Pallet Size (cm)	Rolls in box	Box on Pallet
10 cm	10 m	100x120	6 rolls	84 boxes
15 cm	10 m	100x120	4 rolls	84 boxes
20 cm	10 m	100x120	3 rolls	84 boxes
30 cm	10 m	100x120	2 rolls	84 boxes
60 cm	10 m	100x120	1 roll	84 boxes
100 cm	10 m	100x120	-	48 Rolls

### Storage Conditions and Shelf Life

2 years from the production date in case it is stored in its sealed and undamaged package in dry ambient conditions at a temperature from +5°C to +30°C away from direct sunlight.

In cases where the air temperature is below +10°C, the use of a hot air source is recommended.



Watertight



High flexibility



Flame-free  
Easy Installation



Good application  
to support



SAFETY DATA SHEET (SDS)



## STARSELF FELT-RAN

Elastomeric Bitumen Based, Self Adhesive, Nonwoven Felt Surfaced Membrane / Tape

<b>PRODUCT NAME</b>	STARSELF FELT-RAN
<b>PRODUCT PROPERTIES</b>	VALUE
<b>Thickness</b>	1,2mm
<b>Roll Width</b>	10 cm – 15 cm – 20 cm – 30 cm – 60 cm - 100 cm
<b>Unit Weight</b>	1,4 kg/m <sup>2</sup>
<b>Roll Length</b>	Standart: 10 m Max: 20 m
<b>Top Surface</b>	Spunbond Nonwoven Polyester Felt
<b>Bottom Surface</b>	Siliconized Film
<b>Color</b>	White
<b>HS Code</b>	6807.10.00.00.00

PERFORMANCE			
Characteristic	Test method	Units	Result
Water tightness to liquid water – Method B 2 kpa	EN 1928	-	Pass
Tensile properties: maximum tensile force / elongation	EN 12311-1	N/50mm	> 350 N/50mm
Durability of water vapour resistance against artificial ageing	EN 1296 + EN 1931	-	Pass
Durability of watertightness against chemicals	EN 1847 + EN 1928	-	Pass
Resistance to tear (nail shank)	EN 12310-1	N	NPD
Impact resistance	EN 12691	mm	NPD
Low temperature flexibility	EN 1109	°C	-25 °C
Flow Resistance at Elevated Temperature	EN 1110	°C	90 °C
Joint strength	EN 12317-1	N/50mm / ±%10	>200 N/50mm
Reaction to fire	EN 13501-1	-	E
Length	EN 1848-1	m	10 m *
Width	EN 1848-1	cm	10 cm – 15 cm – 20 cm – 30 cm – 60 cm - 100 cm
Thickness	EN 1849-1	mm	1,2 mm <sup>±%10</sup>
Mass	EN 1849-1	Kg/m <sup>2</sup>	1,4 kg/ m <sup>2</sup> <sup>±10%</sup>
Visible defects	EN 1850-1	-	None

*\*Special thickness and size can be produced according to customer demands.*

## STARSELF HDPE 1500

Elastomeric Bitumen Based, Self Adhesive, Cross Laminated HDPE Surfaced Membrane

### PRODUCT DESCRIPTION

Self-adhesive waterproofing membrane with cross laminated H.D.P.E surface. The silicone foil on the lower surface is removed and applied.

### APPLICATION AREAS

Horizontal and vertical surfaces

Terrace, roof, roof creek insulation,

For building and construction elements exposed to leakage water, temporary or continuous water pressure protection and insulation.

### ADVANTAGES

Easy to prepare and implement.

Does not require torch and hot air supply.

It adheres to the applied surface.

Helps detail solutions.

It has crack bridging feature.

Provides insulation without requiring drying time after application.

It can be applied on vertical and horizontal surfaces.

### TECHNICAL SPECIFICATIONS

#### Material Properties

**Top Surface :** Cross laminated HDPE

**Bottom Surface :** Silicone Foil

**Color :** Black

**Application Temperature :** +10 °C 30 °C

**Thickness :** 1,50 mm

**Weight :** 2,2 kg/m<sup>2</sup>



Watertight



High flexibility



Flame-free  
Easy installation



Good application  
to support

### Application Procedure

#### Preparation of Substrate

Application surface must be dry, clean and clean off materials which prevent bonding, such as dust, oil, rust and remove loose pieces. High absorbent surfaces such as concrete, plaster, chipboard must be primed with bituminous based primer.

#### Application Method

Peel the removable film layer of STARSELF HDPE 1500 and pressed firmly sticky surface on substrate. Tape should be fully contact with the substrate by pressing its every point on application surface. It should be pressed onto the foil using a silicone roller.

### Packaging

Width (cm)	Length (m)	Pallet Size (cm)	Roll Weight	Rolls in box
100 cm	10 m	100x120	22,00 kg $\pm 10\%$	42 rolls without box
100 cm	10 m	100x120	22,00 kg $\pm 10\%$	30 rolls with box

### Storage Conditions and Shelf Life

2 years from the production date in case it is stored in its sealed and undamaged package in dry ambient conditions at a temperature from +5°C to +30°C away from direct sunlight.

In cases where the air temperature is below +10°C, the use of a hot air source is recommended.



SAFETY DATA SHEET (SDS)

## STARSELF HDPE 1500

Elastomeric Bitumen Based, Self Adhesive, Cross Laminated HDPE Surfaced Membrane

<b>PRODUCT NAME</b>	STARSELF HDPE 1500		
<b>PRODUCT PROPERTIES</b>	VALUE		
<b>Thickness</b>	1,5mm		
<b>Roll Width</b>	100 cm		
<b>Unit Weight</b>	2,2 kg/m <sup>2</sup>		
<b>Roll Length</b>	Standart: 10 m Max: 20 m		
<b>Top Surface</b>	Cross Laminated High Density PE Film		
<b>Bottom Surface</b>	Siliconized Film		
<b>Color</b>	Black		
<b>HS Code</b>	6807.10.00.00.00		
<b>PERFORMANCE</b>			
Characteristic	Test method	Units	Result
Water tightness to liquid water – Method B 2 kpa	EN 1928	-	Pass
Tensile properties: maximum tensile force / elongation	EN 12311-1	N/50mm	> 250 N/50mm
Durability of water vapour resistance against artificial ageing	EN 1296 + EN 1931	-	Pass
Durability of watertightness against chemicals	EN 1847 + EN 1928	-	Pass
Resistance to tear (nail shank)	EN 12310-1	N	NPD
Impact resistance	EN 12691	mm	NPD
Low temperature flexibility	EN 1109	°C	-25 °C
Flow Resistance at Elevated Temperature	EN 1110	°C	80 °C
Joint strength	EN 12317-1	N/50mm / ±%10	>200 N/50mm
Reaction to fire	EN 13501-1	-	E
Length	EN 1848-1	m	10 m *
Width	EN 1848-1	cm	100 cm
Thickness	EN 1849-1	mm	1,5 mm ±%10
Mass	EN 1849-1	Kg/m <sup>2</sup>	2,2 kg/ m <sup>2</sup> ±10%
Visible defects	EN 1850-1	-	None

*\*Special thickness and size can be produced according to customer demands.*

## STARSELF DUO 1500

### Bitumen Based, Self Adhesive, Multipurpose Tape

#### Description

STARSELF DUO is a double-sided, self-adhesive sealing and waterproofing tape made of elastomeric bitumen. It is used for sealing internal welds, slits, crevices and joints. The tape is successfully used not only for sealing, but also for fixing elements, as XPS, Styrapor.

#### Fields of Application

It provides waterproofing with adhering on different substrates such as wood, metal, glass, plaster, concrete etc.

#### Features and Benefits

Double side siliconized film

Applied easily even though inclined surface because of elasticity.

Convenient with bituminous system.

Self adhesive.

Easy to applied.

Applicable on wide range substrates.

#### Properties

<b>Surface</b>	: Siliconized film
<b>Color</b>	: Black Grey
<b>Application Temperature</b>	: +10 °C 30 °C
<b>Thickness / Length</b>	: 1,50 mm / 10 m

#### Application Procedure

##### Preparation of Substrate

Application surface must be dry, clean and clean off materials which prevent bonding, such as dust, oil, rust and remove loose pieces. High absorbent surfaces such as concrete, plaster, chipboard must be primed with bituminous based primer.

##### Application Method

Peel the removable film layer of STARSELF DUO 1500 and pressed firmly sticky surface on substrate. Tape should be fully contact with the substrate by pressing its every point on application surface. It should be pressed onto the foil using a silicone roller.

#### Packaging

Width (cm)	Length (m)	Pallet Size (cm)	Rolls in box	Box on Pallet
5 cm	10 m	100x120	12 rolls	60 boxes
7,5 cm	10 m	100x120	8 rolls	60 boxes
10 cm	10 m	100x120	6 rolls	60 boxes
15 cm	10 m	100x120	4 rolls	60 boxes
20 cm	10 m	100x120	3 rolls	60 boxes
30 cm	10 m	100x120	2 rolls	60 boxes
60 cm	10 m	100x120	1 roll	60 boxes

#### Storage Conditions and Shelf Life

2 years from the production date in case it is stored in its sealed and undamaged package in dry ambient conditions at a temperature from +5°C to +30°C away from direct sunlight.

In cases where the air temperature is below +10°C, the use of a hot air source is recommended.



Watertight



High flexibility



Flame-free  
Easy installation



Good application  
to support



SAFETY DATA SHEET (SDS)

**STARSELF DUO 1500****Bitumen Based, Self Adhesive, Multipurpose Tape**

<b>PRODUCT NAME</b>	STARSELF DUO 1500
<b>PRODUCT PROPERTIES</b>	VALUE
<b>Thickness</b>	1,5 mm
<b>Roll Width</b>	5 cm – 7,5 cm – 10 cm – 15 cm – 20 cm – 30 cm – 60 cm
<b>Unit Weight</b>	2,2 kg/m <sup>2</sup>
<b>Roll Length</b>	10 m
<b>Top Surface</b>	Siliconized Film
<b>Bottom Surface</b>	Siliconized Film
<b>Color</b>	Black, Grey
<b>HS Code</b>	6807.10.00.00.00

*\*Special thickness and size can be produced according to customer demands.\**

## STARSELF SB 2200

### Elastomeric Bitumen Based, Self Adhesive, Sound Blocker Roll

#### Description

STARSELF SB 2200 is a aluminium surfaced, self-adhesive roll made of elastomeric bitumen. It is used for sound blocker and vibration damper.

#### Fields of Application

It adheres on different substrates such as wood, metal, glass, plaster, concrete etc.

#### Features and Benefits

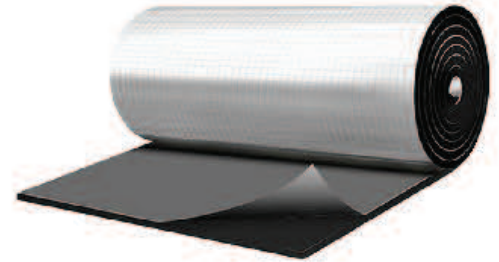
Thick aluminium surface.

Applied easily even though inclined surface because of elasticity.

Self adhesive.

Easy to applied.

Applicable on wide range substrates.



#### Properties

**Surface** : 100 micron Aluminium foil

**Color** : Natural aluminium

**Application Temperature** : +10 °C 30 °C

**Thickness / Length** : 2,2 mm / 5 m

#### Application Procedure

##### Preparation of Substrate

Application surface must be dry, clean and clean off materials which prevent bonding, such as dust, oil, rust and remove loose pieces.

##### Application Method

Peel the removable film layer of STARSELF SB 2200 and pressed firmly sticky surface on substrate. Tape should be fully contact with the substrate by pressing its every point on application surface. It should be pressed onto the foil using a silicone roller.

#### Packaging

Width (cm)	Length (m)	Pallet Size (cm)	Rolls in box	Box on Pallet
80 cm	5 m	100x120	1 rolls	60 boxes

#### Storage Conditions and Shelf Life

2 years from the production date in case it is stored in its sealed and undamaged package in dry ambient conditions at a temperature from +5°C to +30°C away from direct sunlight.

In cases where the air temperature is below +10°C, the use of a hot air source is recommended.



SAFETY DATA SHEET (SDS)

**STARSELF SB 2200****Elastomeric Bitumen Based, Self Adhesive, Sound Blocker Roll**

<b>PRODUCT NAME</b>	STARSELF SB 2200
<b>PRODUCT PROPERTIES</b>	VALUE
<b>Thickness</b>	2,2 mm
<b>Roll Width</b>	80 cm
<b>Unit Weight</b>	3,5 kg/m <sup>2</sup>
<b>Roll Length</b>	5 m
<b>Top Surface</b>	100 Micron Aluminium Surface
<b>Bottom Surface</b>	Siliconized Film
<b>Color</b>	Natural Aluminium
<b>HS Code</b>	6807.10.00.00.00

*"Special thickness and size can be produced according to customer demands."*

## STARMAS<sup>T</sup> CR

### Elastomeric Bitumen Based, Hot Applied Crack Repair Product

#### Description

It is an elastomeric, hot-applied, bitumen-rubber based joint filler used at horizontal joints.

#### Usage Areas

- It is used for waterproofing, filling, repair and adherence in:
- Dilatations, joints,
- Intersections of cement coatings with wide surfaces,
- Dams, channels and ducts,
- And other locations where any dilatation may occur.
- It is used for installing reflective road buttons onto asphalt.

#### Advantages

- It is very elastic. It maintains its elasticity between -20°C and +80°C.
- It is heated up either in a special double walled boiler or directly on a furnace.

#### Surface Preparation

- The surface to be treated must be clean and dry.
- The joints must be cleaned with a wire brush, spiral engine or sandblasting.
- If possible joint spacing must be treated with compressed air.

#### Application

- To provide excellent adherence, and improve durability, non-metallic surfaces can be undercoated with water based bitumen primer, and metallic surfaces can be undercoated with solvent based or water based bitumen primer.
- STARMAS<sup>T</sup> CR is heated up to approximately 160-180°C, mixed thoroughly and poured into joint gaps.
- The surface treated will be ready to use after approximately 1 hour.
- If the product is overheated, that is up to temperatures over 160-180°C or if it is heated up and cooled back for a few times it will be spoiled and cannot be recovered.

#### Packaging

Weight - kg	Packing	Pallet Size (cm)	Box on Pallet
18 kg	Siliconized carton box	80x120	48 boxes
18 kg	Metal bucket	80x120	60 buckets

#### Storage Conditions and Shelf Life

10 years from the production date in case it is stored in its sealed and undamaged package in dry ambient conditions at a temperature from +5°C to +30°C away from direct sunlight.



SAFETY DATA SHEET (SDS)



**STARMAST CR****Elastomeric Bitumen Based, Hot Applied Crack Repair Product**

<b>PRODUCT NAME</b>	STARMAST CR
<b>PRODUCT PROPERTIES</b>	VALUE
<b>Weight</b>	18 kg ±5%
<b>Packing</b>	Siliconized cartoon box / Metal Bucket cm
<b>Softening Point</b>	Min. 90 °C
<b>Penetration</b>	33
<b>Density</b>	1,20 kg/l
<b>Type</b>	Elastomeric bitumen
<b>Application Temperature</b>	160-180 °C
<b>Commissioning Time</b>	Min. 1 hour
<b>HS Code</b>	6807.90.00.00.00

## STARMAST HS

### Elastomeric Bitumen Based, Hot Sealing

#### Description

Starmast HS elastomeric bitumen based, hot applied waterproofing system formulated with special mineral fillers.

#### Usage Areas

Travelled - not travelled terraces

Garden terraces

Underground - surface car park pavements

Tunnels and viaducts

Bonding of boards for insulation and drainage purposes.

#### Advantages

High elastic product,

Crack bridging ability,

100% solid content,

Excellent adherence

Excellent resistance to environmental influences.

#### Surface Preparation

- The surface to be treated must be clean and dry.
- The joints must be cleaned with a wire brush, spiral engine or sandblasting.
- If possible joint spacing must be treated with compressed air.

#### Application

- To provide excellent adherence, and improve durability, non-metallic surfaces can be undercoated with water based bitumen primer, and metallic surfaces can be undercoated with solvent based or water based bitumen primer.
- STARMAST HS is heated up to approximately 160-180°C, mixed thoroughly. It is used special melter for his process. Starmast is applied hot with the help of a trimmer.
- It is applied in at least 2 coats. It is recommended to use geotextile felt between coats for large areas.
- The surface treated will be ready to use after approximately 1 hour.
- If the product is overheated, that is up to temperatures over 160-180°C or if it is heated up and cooled back for a few times it will be spoiled and cannot be recovered.

#### Packaging

Weight - kg	Packing	Pallet Size (cm)	Box on Pallet
18 kg	Siliconized carton box	80x120	48 boxes

#### Storage Conditions and Shelf Life

10 years from the production date in case it is stored in its sealed and undamaged package in dry ambient conditions at a temperature from +5°C to +30°C away from direct sunlight.



SAFETY DATA SHEET (SDS)

**STARMAST HS****Elastomeric Bitumen Based, Hot Sealing**

<b>PRODUCT NAME</b>	STARMAST HS
<b>PRODUCT PROPERTIES</b>	VALUE
<b>Consumption</b>	3,6 kg/m <sup>2</sup>
<b>Weight</b>	18 kg ±5%
<b>Packing</b>	Siliconized carton box / Metal Bucket cm
<b>Softening Point</b>	Min. 100 °C
<b>Penetration</b>	50-70
<b>Density</b>	1,20 kg/l
<b>Type</b>	Elastomeric bitumen
<b>Application Temperature</b>	160-180 °C
<b>Commissioning Time</b>	Min. 1 hour
<b>HS Code</b>	6807.90.00.00.00



**STARBOND METAL TILES & ACCESSORIES**

**STARBOND BITUMEN PRODUCTS**

## **Contact Us**

Starbond Metal Panel Kiremit İnş. İth. İhr. San. ve Tic. Ltd. Şti.

Anadolu Organize Sanayi 7 Cadde No:6

Malıköy - Temelli - Sincan - Ankara - Turkey

☎ : +90 549 334 04 14

Phone : +90 312 522 00 06

Web : [www.starbondmetal.com](http://www.starbondmetal.com)

E-Mail : [export@starbondmetal.com](mailto:export@starbondmetal.com)